

CARDIFF  
UNIVERSITY

PRIFYSGOL  
CAERDYDD



# School of Geography and Planning

## **Undergraduate** Degree Programmes

[www.cardiff.ac.uk/geography-planning](http://www.cardiff.ac.uk/geography-planning)

# Welcome



**Top 100**  
in the world for  
Geography.

Source: QS World University  
Rankings by Subject 2022

Academic Ranking of World  
Universities (ARWU) Shanghai  
Ranking of Academic Subjects 2021

Accredited by  
the Royal Town  
Planning Institute  
(RTPI).



Accredited  
by the Royal  
Geographical  
Society (RGS).





**96%**

of our graduates were in employment and/or further study, due to start a new job or course, or doing other activities such as travelling, 15 months after the end of their course.

Source:  
Higher Education Statistics Agency, Graduate Outcomes Survey 2018/19\*.

**Ranked  
14th**

in the UK for  
Town and Country  
Planning and  
Landscape.

Source:  
The Times/Sunday Times Good  
University Guide 2022



Accredited by the  
Royal Institution  
of Chartered  
Surveyors (RICS).



## Contents

Join us and make a difference	2
Challenging, provocative and transformative	4
Discover adventure, develop experience	8
Fast-track your future	10
Our degree programmes	
• Human Geography (BSc)	12
• Human Geography and Planning (BSc)	13
• Urban Planning and Development (BSc)	14
Generating debate and influencing policy	15
A capital city	16
A leading university	17
Living in Cardiff	18
Applications	19
How to find the school	21

\* Contains HESA Data:  
Copyright Higher Education Statistics Agency Limited 2021. The Higher Education Statistics Agency Limited cannot accept responsibility for any inferences or conclusions derived by third parties from its data.

# Join us and make a difference

Are you passionate about tackling global social, political, economic and development challenges to improve where and how we live?



## There has never been a more important time to study the subjects of human geography and planning.

Human geography focuses on understanding how different places are affected by global issues such as climate change, sustainable development, inequality, and social injustice. It also develops key skills in demand by employers, including the ability to undertake research and data analysis, to think critically, and to debate key environmental and social issues.

And planning too is at the forefront of tackling the challenges facing places. Planning is a forward-thinking and practical field of study which actively influences the sustainability of our towns, cities and countryside. Planners shape the environments within which people live, work and travel, and work closely with politicians, developers and communities to respond to sustainability challenges and improve the quality of places.

Here at Cardiff University, our teaching of human geography and planning is underpinned by the knowledge gained from our agenda-setting research which not only embraces both these subject areas, but also actively influences sustainability and placemaking in practice.

Furthermore, our approach to teaching and research is shaped by our core values which include: the promotion of critical inquiry to advance knowledge and enhance places and the environment; a commitment to sustainability and supporting placemaking which contributes positively to the wellbeing of future generations; and an active focus on addressing social and spatial injustice and valuing equality, diversity and inclusion.

What this means is that you'll benefit from a learning environment which is dynamic, supportive and interactive and where your voice is heard. You'll experience programmes of study which enhance your employability, with all our undergraduate programmes being accredited (or partially accredited) or endorsed by the UK's leading learned societies or professional associations in the fields of geography and planning. You'll join an active and engaged community of staff and students where there are numerous events and activities to engage in together. And you'll have the opportunity to participate in a range of exciting field study visits that will further develop your understanding of placemaking in practice.

So if you're interested in how to make places better for the future, then come and see what we have to offer. Our vibrant, future-focused and diverse community is a place where I'm sure you will fulfil your ambitions and thrive.

### Professor Gillian Bristow

Head of School



# Challenging, provocative and transformative

We question the world we live in, searching for solutions to transform people, places and environments around the world.



We are committed to protecting and growing the spaces that nurture us, improving the communities that shape us, developing the institutions that bind us, and influencing the people that lead us.

### Who are we?

We are one of the leading schools in the UK for teaching and research in human geography and spatial planning. Our reputation is built on delivering pioneering, impactful research and innovative teaching. If you join us, you will become part of an invigorating and stimulating environment in which you can pursue your passions, advance your academic ambitions and develop your professional profile and skills.

### Our approach

We focus on the grand challenges faced by human societies and places in the 21st century. We'll enable and encourage you to apply critical thinking and practical knowledge to address the impacts of economic, social,

political and cultural change on the built and natural environment. You'll be empowered to question the status quo and think differently to effect real, positive and lasting change.

As one of the largest schools of our kind in the UK, with over 70 teaching, research and support staff, you will be welcomed into a dynamic, diverse and proactive community. You'll be exposed to research-active academics working at the forefront of their subject areas which will allow you to pursue specialist interests in line with their expertise.

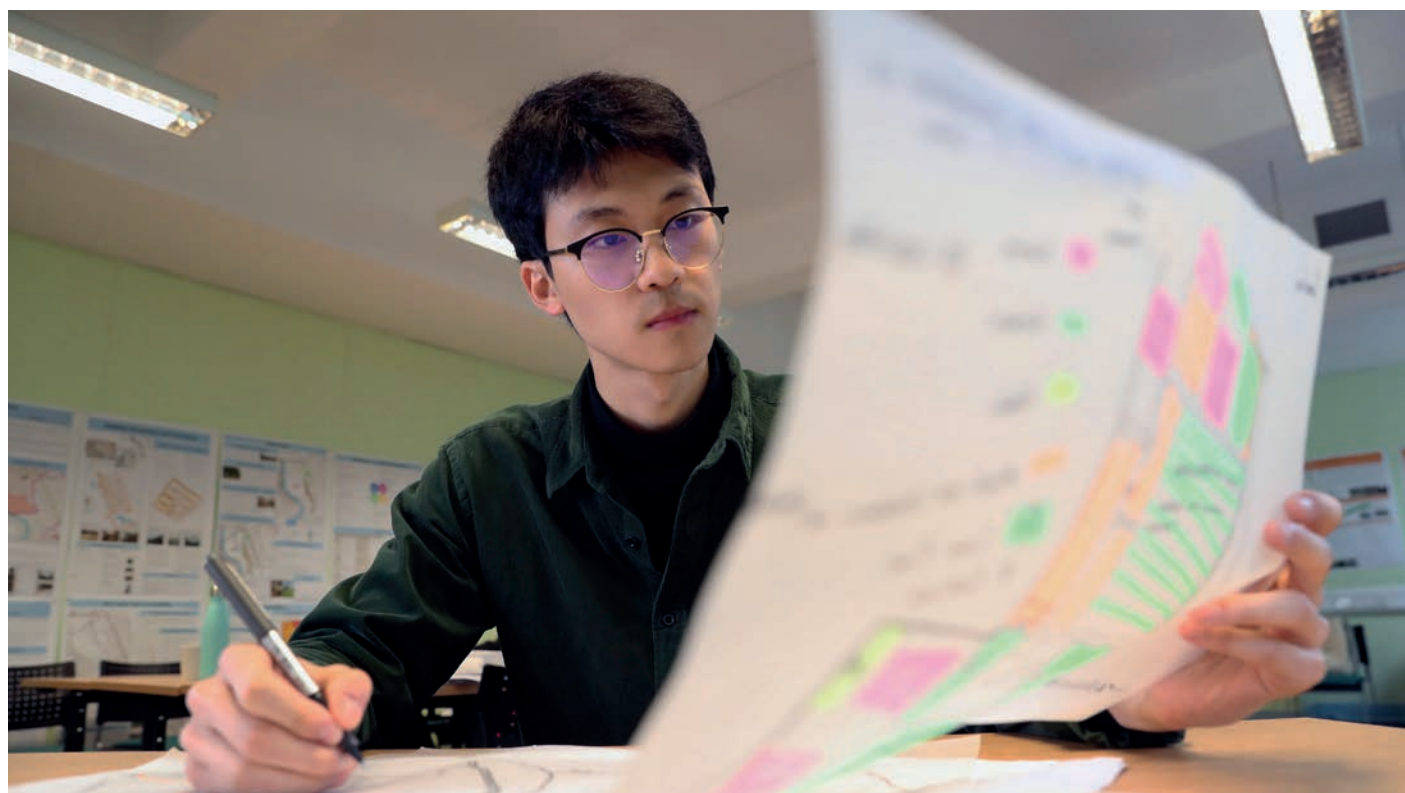
### Connected

We have long-established relationships with professional bodies and industry partners. These links ensure we are part of the evolving conversations around geography



and planning issues. All our undergraduate programmes are accredited (partially or fully) by the UK's leading learned societies or professional associations in the fields of geography, planning and surveying – Royal Geographical Society (RGS), Royal Town Planning Institute (RTPI) and the Royal Institution of Chartered Surveyors (RICS).

Recognising the importance of industry voices and practitioner experience, we regularly host events with external speakers to provide you with insights into links between academic ideas, policy and practice. This is a great way to develop your industry and specialised knowledge while building your professional relationships. It is also an excellent forum for you to learn about a variety of careers and begin thinking about your ambitions.



## Strengthened by diversity

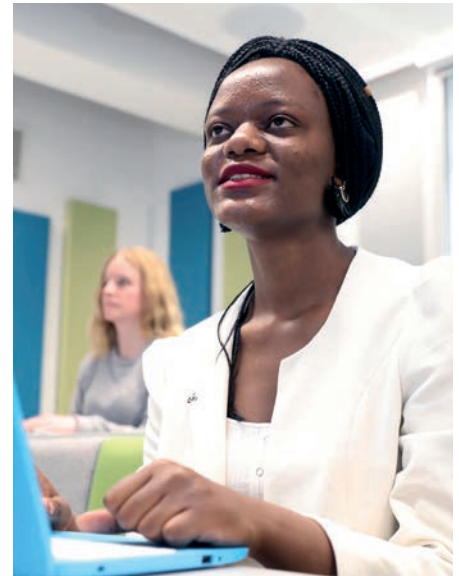
When you join us, you'll become part of an international community, with staff and students from almost 30 countries including Australia, China, Iran, Pakistan and the USA. This international and diverse outlook strengthens your learning experience and gives you the opportunity to participate in a truly global dialogue – discussing and debating programme themes and contemporary issues with peers who are informed and influenced by different cultural contexts and considerations.

Understanding and appreciating different cultures, customs and perspectives enriches our work and our lives. It is an excellent way to expand your thinking and broaden your frame of reference, enhancing your personal, professional and academic development.

## Equipped for success

As a leading research centre we are especially well resourced, ensuring you have access to the facilities and equipment necessary to succeed during your degree.

We are based in the iconic, Grade 1-listed Glamorgan Building and much of our teaching is delivered here. Yet, while our home is historic, our facilities are fit for the 21st century with a wide range of modern lecture theatres, seminar rooms, design studios, and computer labs. The computer teaching facilities are fully supported by technical staff and are equipped with all packages relevant to your studies, including database management, computer-aided design, GIS and statistical and graphical software.







“

My decision to study at Cardiff was confirmed immediately after attending the open day - I found the lecturers incredibly passionate about what they did, and this really enticed me.

My experience really lived up to this initial day - I spent three years immersed in interesting modules touching upon a wide array of subjects, in which the lecturers were extremely enthusiastic and were always there to help if I had any questions.

**Camilla d'Aguilar**

Human Geography  
(BSc 2018)

”

# Discover adventure, develop experience

You're guaranteed a first-rate academic experience with us, but we want to ensure you have the opportunity for wider personal and professional reflection as well.





You could choose to broaden your academic knowledge, participate in new research, learn a language or immerse yourself in another culture.

### Studying in the field

We're committed to playing our part in addressing the grand challenges facing people and communities. Prime amongst these is the climate emergency, and we are mindful of the impact of our travel footprint and modes of travel. Our field study visits will focus on UK locations, with potential for European destinations. They'll reflect the excellent research undertaken by our staff and our passion for field and location-based study. Other forms of experiential learning and field analysis will focus on topics and communities at local, national, and international levels.

### Learn a language

The University's flagship and flexible **Languages for All** programme allows you to learn a language in a way that suits you, whether it is weekly, intensively or independently, for free and alongside your studies. Whether you are a complete beginner or just want to further improve your language skills, all abilities are catered for.

You can choose from nine different languages: Arabic; French; German; Italian; Japanese; Mandarin Chinese; Portuguese; Russian; and Spanish.

We also offer the innovative **Welsh for All** programme which enables you to learn Welsh alongside your studies.

### Earn and learn

#### CUROP

The Cardiff Undergraduate Research Opportunities Programme offers you a grant – currently £9.98 an hour for up to 200 hours over the summer (notionally 25 hours per week) – to take part in a summer placement within any of the university's academic schools, working alongside academic staff as a research assistant. The projects provide unique opportunities for you to participate in academic research, enhance your academic skills and make a more informed decision on furthering your research at postgraduate level. Your work could form the basis for a research publication, which we'll upload to our institutional repository, where it will be available for researchers worldwide to download. You'll also come together with other CUROP students at a conference to exhibit posters about your research, sharing experiences and disseminating your research findings to a broad university audience.

#### CUSEIP

Cardiff University Student Education Innovation Projects enables you to work on projects that aim to enhance learning and teaching and shape student experience at Cardiff University. Like the CUROP opportunity, CUSEIP offers you a grant – currently £9.98 an hour for up to 200 hours over the summer (notionally 25 hours per week). Following your placement, you will join all participating students in exhibiting posters relating to your projects, sharing your experiences and disseminating your findings to a broad university audience.

# Fast-track your future

We're deeply committed to helping you achieve your academic and professional ambitions but how do you stand out in a global and competitive marketplace?



While our exciting, challenge-led curriculum and supportive learning environment will enable you to excel in your selected subject, we also recognise the importance of professional experience.

Increasingly, employers are looking for graduates who not only have specialist knowledge but also practical experience of applying this in the workplace. To help you compete in the global market, we provide a wide range of practical opportunities designed to develop your skills, deepen your understanding and enhance your employability.

### Professional placement year

All our programmes are now available with a professional placement year. You would take a salaried placement in your third year before returning to us for your fourth and final year of study.

A year in industry enables you to develop your professional know-how and understanding before you graduate. You will be able to practically apply your learning to a contemporary workplace setting, engaging in a range of activities and exercises that will build your confidence and competence.

Your placement provider will deliver a range of experience and a structured programme of work which contributes towards the professional experience requirements of the relevant accrediting professional body (RTPI and RICS), providing one of the minimum two years' professional experience for full membership\*.

We will help you to secure this salaried placement, but many students often source their placements directly with companies and organisations that are of interest to them and complement their career ambitions. Previous placement employers have been drawn from the private and public sectors, as well as in the third sector such as charitable trusts and campaigning organisations.

As a placement student you will complete a series of assignments that are aligned with the assessment of professional competence (APC) requirements of the professional bodies\*. You will return to the school midway through the placement year to take part in a range of seminars and tutorials. Throughout your placement you will be supported by a school supervisor and have access to the full support services of the school and university.

### In-programme work experience

We recognise that not everyone will want to extend their degree programme in order to complete a professional placement year but will still be looking for real-world experience.

To achieve this, we've incorporated a short-term placement opportunity into the three-year Human Geography (BSc) and Human Geography and Planning (BSc) programmes through the Citizen Geographies module.

We will support you in finding your placement, providing you with the opportunity to engage with the university's work experience team.

The Citizen Geographies module also currently incorporates professional citizenship skills sessions where you will undertake exercises to help you nurture and develop key workplace skills such as team working, communication, fairness, recognition of diversity and corporate social responsibility.

### The Cardiff Award

Outside of the transferable analytical and employability skills you will develop through your studies, we also encourage you to participate in the Cardiff Award scheme. This is a structured employability programme run by the Students' Union, which enables you to gain experience and reflect on your skills and attributes in preparation for the workplace. It offers you the opportunity to gain recognition for these skills while helping to improve your professionalism and employability, increase self-awareness of your skills and enable you to articulate these effectively to future recruiters.

We also recommend you participate in the Royal Geographical Society's Ambassadors Scheme, which recruits, trains and supports student geographers to act as ambassadors for geography in the classroom and beyond. This is a way of developing new skills and building your network within the geography discipline.

\*Relevant to the RTPI and RICS accredited programmes only



Don't just take our word for it . . .

**I took a year-long placement during the third year and feel that this has been invaluable. It allows you to combine your academic knowledge with professional experience and makes the process of applying for graduate jobs a lot easier as you've already got a year of practice under your belt. Whilst on placement you do still have assignments, but they are typically related to professional development and setting a career path for yourself which is extremely useful.**

Hasnain Ikram  
Urban Planning and Development  
(BSc 2019)

# Our degree programmes

## Human Geography **BSc**

UCAS Codes:

**L700** three-year programme

**L701** four-year professional placement programme



Tackle the global contemporary social, political, economic and environmental challenges which affect how and where we live.

Human geography is the study of our world and our relationships with systems, policies, cultures and social behaviours. It is about where we live, how we live, and how we want to live.

Our world is complex, our lives complicated. Multidimensional social and political issues – local, national and global - stream across our television screens and social media. They have the power when misunderstood, or misrepresented, to pollute public discourse, breed division and undermine social cohesion.

Our programme provides you with the knowledge and critical understanding of the intricate relations between the natural and human world and an awareness of how places outside your everyday experience are created. You will learn how to use your knowledge to shape the views and actions of elected decision-makers, the voluntary sector and industry, in order to improve society.

Together, we will explore geographical ideas and practice at various spatial scales,

making connections between the local, regional, national and global levels. While the programme will emphasise the social, cultural, political, economic, development and environmental components of geography, it also includes a range of specialist modules which will enable you to pursue your own interests and passions.

### Expansive education

We offer a diverse selection of optional modules to complement our core modules. Optional modules are reviewed regularly but recent areas of study have included: Sustainable Development; Social Geographies (Spaces of Inequality and Welfare); Development and the Global South; and Political Geography (Place, Space and Power).

*Full module lists can be found on our website.*

### Distinctive features

- Accredited by the Royal Geographical Society (RGS)
- Ranked in the Top 100 in the world for Geography (QS World University Rankings by Subject 2022)
- Field study visits to explore programme themes and issues on location



Don't just take our word for it . . .

**I would argue that human geography is unparalleled in its ability to offer interesting, challenging, and diverse topics of study. On countless occasions it has changed my perspective of the world, the relations I have with others, and my ability to critically analyse arguments which are at the forefront of global discussion. In all honesty this degree rarely felt like work. Instead, I was offered a platform to explore what I was truly passionate about under the guidance of some of the top academic minds in the country.**

Matthew Ellis  
Human Geography (BSc 2019)

# Human Geography and Planning BSc

UCAS Codes:

**LK74** three-year programme

**LK75** four-year professional placement programme



Explore the changing nature of space and place and help solve the major social and development issues affecting communities in the UK and around the world.

Our programme combines the problem-solving approaches of planning with the topical insights of geography, equipping you with the skills, knowledge and confidence needed to tackle the challenges affecting how and where we live.

It fosters an understanding of the main geographical trends in the world today, along with the analytical skills to study spatial change. You will examine the changing nature of spaces and places, the relationship between society and space, and the role of the state. Placing local and national issues in a global context, we cover topics from environmental change in the UK, and economic and social change in Wales, to regional and international development.

You will gain an understanding of global, national and local processes of change, key environmental, social, cultural, political and economic trends and the role that planning plays in shaping their effects on different places. Detailed case study work through field study visits, away days and projects will

give you an appreciation of transnational spatial change.

## Expansive education

We offer a diverse selection of optional modules to complement our core modules. Optional modules are reviewed regularly but recent areas of study have included: Liveable Cities; Places and Plans; Society, Diversity and Planning; Urban Economies; Social Geography (Spaces of Inequality and Welfare); and Regulating Development (Planning Law and Policy).

Full module lists can be found on our website.

*The programme outline provided relates to the RTP1-accredited pathway. The programme can also be taken on a non-accredited pathway which involves a different selection of module combinations. Further information is available on our website.*

## Distinctive features

- Partially accredited by the Royal Town Planning Institute (RTP1)
- Field study visits to explore programme themes and issues on location



“Don't just take our word for it . . .”

**I loved studying geography at A-level and knew that I wanted to continue to study it at university, but I was also interested in planning. There's such a range of modules on offer. I've particularly enjoyed the Sustainable Transport, Places and Plans and Liveable Cities modules. They all contained different assignment possibilities such as videos and posters, offered a broad range of topics and field studies, as well as the opportunity to collect your own research.**

Sophie Jones  
Human Geography and Planning  
(BSc 2019)

# Urban Planning and Development **BSc**

UCAS Codes:

**K490** three-year programme

**K446** four-year professional placement programme



## Explore how planning shapes how we live, travel and interact with people and places.

What can be more exciting than the challenge and responsibility of shaping the places in which we live, work and play?

Our programme focuses on the social, economic and environmental challenges of creating better places in which to live. It will provide you with the knowledge, tools and confidence to transform policy and practice to overcome those challenges.

Planning impacts our everyday reality in so many ways, influencing the homes in which we live and the quality and availability of opportunities which can support our health, wealth and collective well-being. It can affect our public and community spaces and our professional and leisure spaces, as well as how we travel and move between them. You will examine how and why places, such as cities, towns, and the countryside, change and how they can be improved through planning practice and research.

This programme opens up a wide range of exciting career opportunities in planning, development and surveying. Our graduates have an excellent track record of securing

employment in these sectors as well as transport, economic development, environmental policy, housing and urban regeneration.

With modules that involve leaders and experts from the world of practice, you will also have the opportunity to understand how your learning applies to the real world and consider the ways in which you can develop your professional profile and employability.

### Expansive education

We offer a diverse selection of optional modules to complement our core modules. Optional modules are reviewed regularly but recent areas of study have included: Urban Economies; Property, Urban Development and Regeneration; Sustainable Development (Concepts, Practices and Challenges); Learning from Liveable Cities; Regulating Development (Planning Law and Policy); and Community Engagement, Mediation and Negotiation Skills.

*Full module lists can be found on our website.*

### Distinctive features

- Accredited or partially accredited by the Royal Town Planning Institute (RTPI) and the Royal Institution of Chartered Surveyors (RICS)
- Field study visits to explore programme themes and issues on location



“Don't just take our word for it . . .”

**This programme has a fantastic range of modules, from sustainability to planning law and theory, which means that I graduated with a strong and broad knowledge of the industry. The school hosted numerous public talks and events which were free to attend and great for those seeking to generate new ideas and boost their CV.**

Astrid Guthier

Urban Planning and Development (BSc 2019)



# Generating debate and influencing policy

Our international reputation for research quality and excellence directly enhances the quality of our teaching and your overall academic experience.

You benefit from the most up-to-date information and instruction as a result of staff involvement in research, both domestically in the UK and around the world. We are also defined by our commitment to engage with the wide range of actors involved in the planning, governance and development of cities, regions and rural spaces.

Our Innovation and Engagement Unit plays a key role in this through its timetable of high-profile research seminars and public lectures. You will be able to attend these events to learn more about wider research and policy debates in the fields of planning and human geography.

We have research strengths in human geography and planning in the following areas:

- The **Environment Research Group** combines expertise in a wide range of theories and methods including biosecurity, participatory democracy,

social justice, food security and ecological footprinting. Its members share a commitment to innovation and engagement and an interest in the development of collaborative approaches with researchers in other disciplines.

- The **Spatial Planning and Analysis in City Environments Research Group** specialises in both theoretical and applied research on a wide range of topics related to cities and urban environments. Research includes that which helps us better understand the way cities and urban environments work as well as helping to develop better planning and policy approaches to designing and managing urban settlements. The substantive interests of the group include land use, population change, urban morphology, transport, and housing.

- The **Economic and Political Worlds Research Group** is concerned with theoretical and applied research on how economic and political processes are created, and their impact on society, politics and economies. Research in the group includes exploration of regional and urban development, innovation, entrepreneurship, corporations and globalisation, and urban governance and politics.
- The **Social and Cultural Geography Research Group** brings together social and cultural geographers to engage with feminist, postcolonial and other theoretical perspectives within human geography. Such critical thinking is undertaken with reference to a diverse range of empirical topics such as breastfeeding, homelessness, drugs and alcohol, cycling, food banks, religion, surfing, fashion, music and dance, animal-human interactions, and community gardens and allotments.



# A capital city



Cardiff is a compact city with an enormous character. Nestled between the rugged coastline and breathtaking mountainous scenery of Wales, the country's capital is a cornucopia of culture, marrying historical delights with cosmopolitan amenities.

Providing an endless array of activities, one stroll through its cobbled streets can see you learn about the rich tapestry of Cardiff's past at Cardiff Castle before soaking in the atmosphere as the crowds spill from the Principality Stadium after one of the many sporting events it holds year round.

The vibrant and independent culinary scene is the heartbeat of the city. With something

to please every palate, you can enjoy fine dining, plant-based treats and exotic cuisines from almost every corner of the globe, without forgetting Welsh cakes for dessert!

Wales is the land of song, and Cardiff certainly contributes heftily to this legacy. This city is built with music running through its veins, from the oldest record store in the world Spillers Records, which is tucked away in Morgan Arcade, to more contemporary and intimate venues which host some of the world's most exciting new musical talent.

Though your Cardiff bucket list may be bursting at the seams, be sure to make a little room for our National Museum which is a place of

true wonder, while the iconic Wales Millennium Centre in the idyllic setting of Cardiff Bay is simply not to be missed.

Bustling with personality, Cardiff is a city made for students, offering an endless string of entertainment opportunities while remaining inexpensive and easy to navigate.

The modern shopping centres, aesthetic arcades, luscious green parks and thriving nightlife are a huge draw for living in Cardiff, though you'll always find your way back to our Students' Union, which is the true home of the student scene in the city.

“The official capital of Wales only since 1955, the buoyant city of Cardiff (Caerdydd) has, since the turn of the millennium, witnessed a remarkable evolution from a large town to a truly international city, with massive developments in the centre as well as on the rejuvenated waterfront. With a reputation as a party town, allied to lots of top-class sport and cultural attractions, it is one of the UK's most enticing destinations.”

Rough Guide 2020

# A leading university

Part of the  
**RUSSELL  
GROUP**



“Cardiff University is highly rated on a local and global scale.”

The Telegraph

Our students learn from leading researchers in over 300 courses across the university. As Wales’ only Russell Group institution, we have gained an international reputation for excellence in teaching and research, which is built from our history of achievement since 1883.

Cardiff University becomes home for approximately 5,500 new undergraduate students every year. While competition for places is strong, we pride ourselves on being an inclusive university, welcoming applications from everyone who wishes to study with us.

We are a global university with over 7,900 international students from more than 130 countries and open our doors to all applications, irrespective of background.

## Facilities and development

Committed to investing in our services, Cardiff University is home to new and well-equipped laboratories, lecture theatres, libraries and

computing facilities to name a few, with more exciting developments continuously underway.

We take our environmental, safety and security responsibilities seriously, embracing our comprehensive Energy, Water and Waste Policy, which is already making great savings in energy consumption and helping us to do our bit to tackle climate change.

## Global Opportunities

We are partnered with over 200 leading institutions across the world, and our Global Opportunities team will help you to gain valuable international experience, through study, work or volunteering.

## Supporting you

Our student support and wellbeing centres deliver a substantial range of services available to all students that are free, impartial, non-judgemental and confidential, aimed to help you make the most of student life and support you during your study.

We are also rated as one of the best universities for supporting LGBT+ students and are proud to be ranked highly in the Stonewall Workplace Equality Index.



## Virtual campus tour

Discover more about the university and the city of Cardiff through our interactive online tour at:

[virtualltour.cardiff.ac.uk](https://virtualltour.cardiff.ac.uk)

# Living in Cardiff



“Cardiff has one of the biggest, best and most active students’ unions in the UK, with high quality facilities including Y Plas, a 2,150 capacity nightclub; and the Great Hall, a major concert venue.”

Complete University Guide, 2020

Cardiff is the perfect place to be a student. It mirrors the hive of activity a big city offers, but in an intimate and compact setting with endless character. Drink in the atmosphere, soak up the culture and get stuck into the host of activities available in our city; your new home.

## A guarantee of accommodation

If you accept your offer of a place at Cardiff on a firm basis, you are guaranteed a single occupancy place in university accommodation during your first year, living with other first year undergraduate students.

The residential dates for your particular accommodation will be confirmed in your Offer of Residence.

## Residence Life

While staying in Cardiff student accommodation, you will have access to the incredible service provided by the Residence Life Team who work tirelessly to enhance your student experience.

Working in partnership with Student Support and Wellbeing, the Residences Office and the Students’ Union, Residence Life will welcome you to Cardiff and help you to make a smooth transition into university.

They also help foster a strong sense of community through social events and cultural activities, as well as practical support too.

## Students’ Union

Our Students’ Union is at the heart of the Cardiff student experience. It’s a student-led and independent part of the university, dedicated to making your time with us the best it can be.

Built on the foundation of inclusion, diversity, personal development and friendship, the Students’ Union runs a range of activities and services to help enhance your Cardiff university experience.

These include advice, training, skills development, entertainment, volunteering opportunities and employment throughout your time at Cardiff and to prepare you for a career after University too.

## Find out more . . .

### Accommodation

For further information please visit our website: [www.cardiff.ac.uk/residences](http://www.cardiff.ac.uk/residences)

You can also watch our residences film online at: [www.youtube.com/watch?v=hxzX-dYlfB8](https://www.youtube.com/watch?v=hxzX-dYlfB8)

### Students’ Union

 [facebook.com/cardiffstudents](https://facebook.com/cardiffstudents)

 [snapchat.com/add/cardiffstudents](https://snapchat.com/add/cardiffstudents)

 [instagram.com/cardiffstudents](https://instagram.com/cardiffstudents)

 [@cardiffstudents](https://twitter.com/cardiffstudents)

 [www.youtube.com/cardiffstudents](https://www.youtube.com/cardiffstudents)

# Applications



To be considered for entry onto any of the undergraduate courses offered in the School of Geography and Planning you should apply through UCAS:

UCAS, Rosehill, New Barn Lane, Cheltenham, Glos, GL52 3LZ, UK

[www.ucas.com](http://www.ucas.com)

## Entry requirements

All applicants must normally have passed English Language and Mathematics at GCSE (at least grade C) or have an equivalent qualification.

### Human Geography (BSc)

**UCAS Code:** L700 (three years) or L701 (four years with professional placement)

**A-level:** Typical offer AAB-ABB

### Human Geography and Planning (BSc)

**UCAS Code:** LK74 (three years) or LK75 (four years with professional placement)

**A-level:** Typical offer ABB-BBB

### Urban Planning and Development (BSc)

**UCAS Code:** K490 (three years) or K446 (four years with professional placement)

**A-level:** Typical offer BBB-BBC

We don't ask for a set combination of subjects and although geography at A-level is beneficial it is not an essential requirement.

The UCAS Tariff is applied to all UK qualifications. General Studies is not accepted as an A-level subject for Admissions purposes.

Applications from those holding alternative equivalent/overseas qualifications are welcome. Please see our website for details including English language requirements.

## Equality and diversity

We are committed to supporting, developing and promoting equality and diversity in all our practices and activities.

We aim to establish an inclusive culture free from discrimination and based upon the values of dignity, courtesy and respect. We recognise the right of every person to be treated in accordance with these values.

We are committed to advancing equality on the grounds of age, disability, gender reassignment, marriage and civil partnership, pregnancy and maternity, race, religion and belief (including lack of belief), sex and sexual orientation and to fostering good relations between different groups.

For further information, please visit:

[www.cardiff.ac.uk/public-information/equality-and-diversity](http://www.cardiff.ac.uk/public-information/equality-and-diversity)

## Applications *continued*



### Open Days

The University runs Open Days throughout the year giving anyone considering applying to Cardiff the chance to find out more about life at university and see what we offer.

If you apply and are offered a place, you will be invited to meet us at our specially-devised school Offer-Holder Days. When making that important decision, we strongly encourage you to join us. Not only will you have the opportunity to hear more about our degrees, you will also meet staff, have the chance to talk to current students and to get the feel for our cosmopolitan capital city.

### Student support

Whether or not you use student support services it's reassuring to know that they are available to you should you need them. Every student is assigned a personal tutor but should you need extra support we have a range of services available to you. Such as;

- Disability and Dyslexia support
  - Counselling and Wellbeing Guidance
  - International Student Support
  - Student Mentor Scheme
- [www.cardiff.ac.uk/study/student-life/student-support](http://www.cardiff.ac.uk/study/student-life/student-support)

### Tuition fees and financial assistance

The University charges an annual fee which covers all tuition fees, registration and examinations other than the re-taking of examinations by applicants not currently registered. Please note charges for accommodation in University Residences are additional.

### Tuition fees

Please see the following website for more information: [www.cardiff.ac.uk/fees](http://www.cardiff.ac.uk/fees)

### Scholarships and bursaries




For more information please visit the following website: [www.cardiff.ac.uk/scholarships](http://www.cardiff.ac.uk/scholarships)

#### Find out more . . .

[www.cardiff.ac.uk/study/student-life/student-support](http://www.cardiff.ac.uk/study/student-life/student-support)

Email: [studentsupportcentre@cardiff.ac.uk](mailto:studentsupportcentre@cardiff.ac.uk)

Tel: +44 (0)29 2087 4844

-  [facebook.com/studentlifecu](https://facebook.com/studentlifecu)
-  [@cardiffstudents](https://twitter.com/cardiffstudents)
-  [www.youtube.com/Cardiffuni](https://www.youtube.com/Cardiffuni)



## Important Legal Information

The contents of this brochure relate to the Entry 2023 admissions cycle and are correct at the time of going to press in June 2022. However, there is a lengthy period of time between printing this brochure and applications being made to, and processed by us, so please check our website at: [www.cardiff.ac.uk](http://www.cardiff.ac.uk) before making an application in case there are any changes to the course you are interested in or to other facilities and services described here. Where there is a difference between the contents of this brochure and our website, the contents of the website take precedence and represent the basis on which we intend to deliver our services to you.

Your degree: Students admitted to Cardiff University study for a Cardiff University degree.

This brochure is printed on paper obtained from well managed sources using vegetable-based inks. Both the paper used in the production of this prospectus and the manufacturing process are FSC® certified. The printers are also accredited to ISO14001, the internationally recognised environmental standard.

When you have finished with this brochure it can be recycled, but please consider passing on to a friend or leaving it in your careers library for others to use.




Thank you.

Cardiff University is a registered charity, no. 1136855

## How to find the school

We are located in the Glamorgan Building, which sits at the heart of the Cathays Park Campus, a short walk away from the City Centre. The building is very close to Cathays railway station and is easily accessible from the halls of residence.

## Key

-  School of Geography and Planning
-  University and NHS buildings
-  Student residences

This prospectus can be made available in alternative formats, including large print (text), Braille and on audio tape/CD.

To request an alternative format please contact Laura Roberts:

Tel: **029 2087 4455**

Email: [RobertsL9@cardiff.ac.uk](mailto:RobertsL9@cardiff.ac.uk)

**CARDIFF**  
UNIVERSITY

PRIFYSGOL  
CAERDYDD

To find out more about the  
School of Geography and Planning  
please visit our website:

[www.cardiff.ac.uk/geography-  
planning](http://www.cardiff.ac.uk/geography-planning)

## Contact us

Tel: **+44 (0)29 2087 4022**

Email:

[gandpenquiries@cardiff.ac.uk](mailto:gandpenquiries@cardiff.ac.uk)

School of Geography and Planning  
Cardiff University  
Glamorgan Building  
King Edward VII Avenue  
Cardiff CF10 3WA, UK

## Stay in touch



cardiffgeographyandplanning



@CUGeogPlan

## Student life

Got questions about student life?  
Get them answered at:

[www.cardiff.ac.uk/  
studentbloggers](http://www.cardiff.ac.uk/studentbloggers)

Want to know more about life at  
Cardiff University? Our student  
bloggers are recording their  
experiences and are happy to  
answer your questions.

Our student bloggers are real  
students studying on a range of  
courses. They are here to answer  
any questions you have about life at  
Cardiff University. What's a typical  
day like? What clubs and societies  
are there? Is Cardiff's music  
scene any good? It can be almost  
anything.



THE  TIMES  
THE SUNDAY TIMES  
**GOOD  
UNIVERSITY  
GUIDE  
2022**

**WELSH  
UNIVERSITY  
OF THE YEAR**